

Notre Dame School Kiss and Go Zones

The Kiss and Go zones on South Park Drive are a designated area where parents quickly either drop off or collect their children without having to leave their vehicle or enter the school grounds. The children can be dropped off safely and enter the school without concern.

The rules of the Kiss and Go are simple. Parents are to stay **no longer than two minutes** during the designated times. This ensures a swift arrival and departure and allows other parents to enter the Kiss and Go zones. If two minutes expires and the child has not arrived, parents will depart the Kiss and Go zone and then re-enter as space allows.

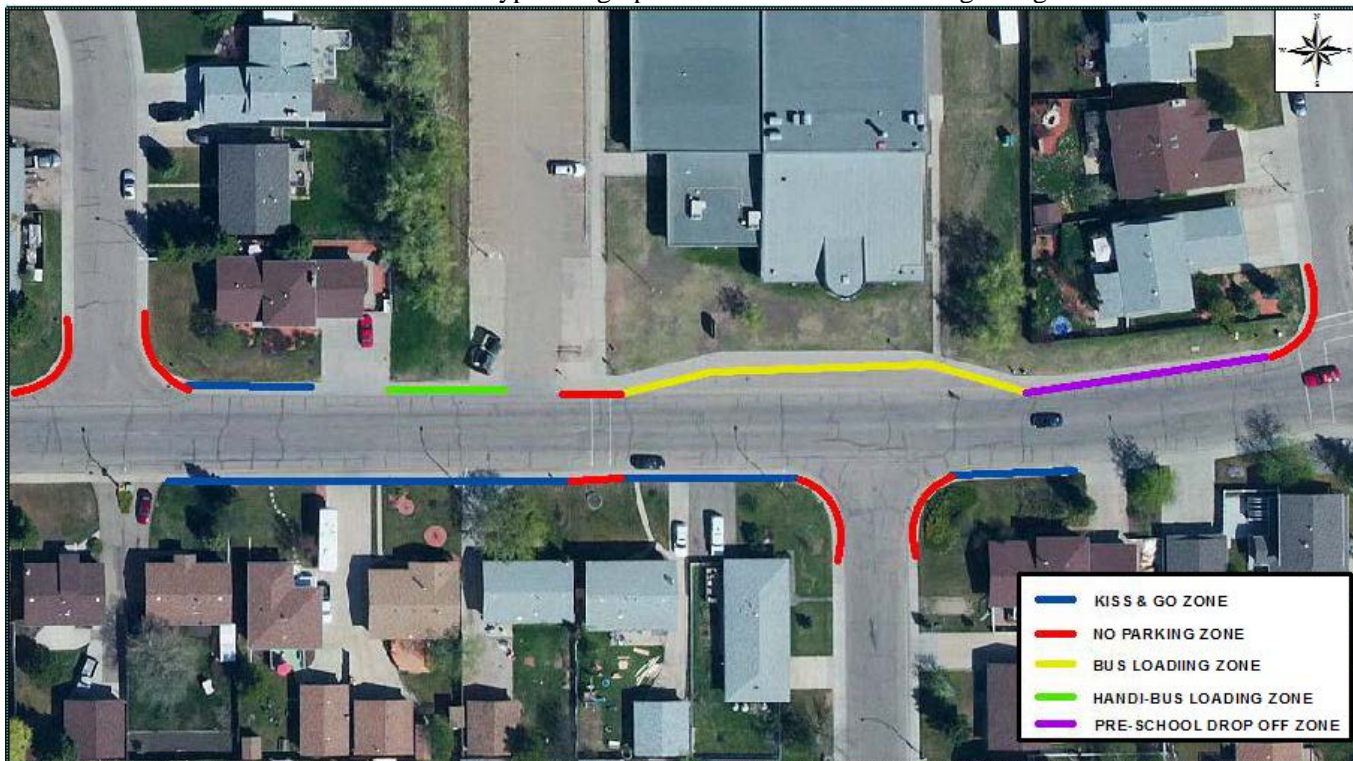
Drivers are not allowed to leave their vehicles and it is the student's responsibility to keep an eye out for their parents' car and ready themselves for collection. Similarly at drop off, students are to quickly disembark the vehicle.



The signs are placed at each end of the Kiss and Go Zones. It states the 2 minute time limit between 8:30am to 9:30am and 2:30pm to 3:30pm.



Typical sign placement on the street designating a Kiss & Go zone.



The map above illustrates the various parking restrictions along South Park Drive at Notre Dame School.

For any inquires please call City of Leduc Engineering Services at 780-980-7107.